

OXY



---

## Table of Contents

**About Occidental College**

-  
-

**Campus Safety Department**

-  
-  
-  
-

**Reporting Crimes or Other Emergencies**

-  
-  
-  
-

**Campus Security Policies, Crime Prevention, and Safety Awareness Programs**

-  
-  
-  
-

**Sexual Misconduct, Intimate Partner Violence, and Stalking: Policy**

-  
-  
-  
-

**Prevention of Sexual Misconduct, Intimate Partner Violence, and Stalking**

-  
-  
-  
-

-  
-  
-  
-

-  
-  
-  
-

-  
-  
-  
-

-  
-  
-  
-



---

**Emergency Management**

—  
—  
—  
—  
—

**Security of and Access to College Facilities**

—  
—  
—  
—  
—  
—  
—  
—  
—

**Residential Education and Housing Services**

—  
—  
—  
—

**Alcohol and Other Drugs Policy**

—  
—  
—  
—  
—  
—  
—  
—  
—  
—

**Annual Disclosure of Crime Statistics**

—  
—  
—  
—  
—

**Fire Safety Report**

—  
—  
—  
—  
—  
—  
—  
—  
—  
—  
—  
—  
—  
—  
—

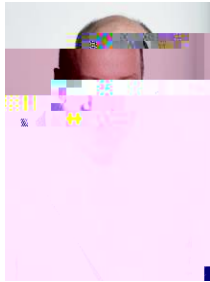
**Emergency Services Contact Information**

—



---

**Message from**  
**The President**



*President*



---

**Message from**

# **The Director of Campus Safety**



*Clery Act*

*Director of Campus Safety*

---



---

# About Occidental College

**Preparation of the Annual Security Report and Crime Statistics**



---

[oxy.edu/admission-aid  
resources/working-oxy](https://oxy.edu/admission-aid/resources/working-oxy)

[oxy.edu/campus-safety](https://oxy.edu/campus-safety)

[oxy.edu/human-](https://oxy.edu/human-)



# Campus Safety Department

## Role, Authority, and Training

### Working Relationship with Local, State, and Federal Law Enforcement Agencies

[www.oxy.edu/sexual-respect-title-ix/policies-procedures/lapd-memorandum-agreement-faq](http://www.oxy.edu/sexual-respect-title-ix/policies-procedures/lapd-memorandum-agreement-faq)





---

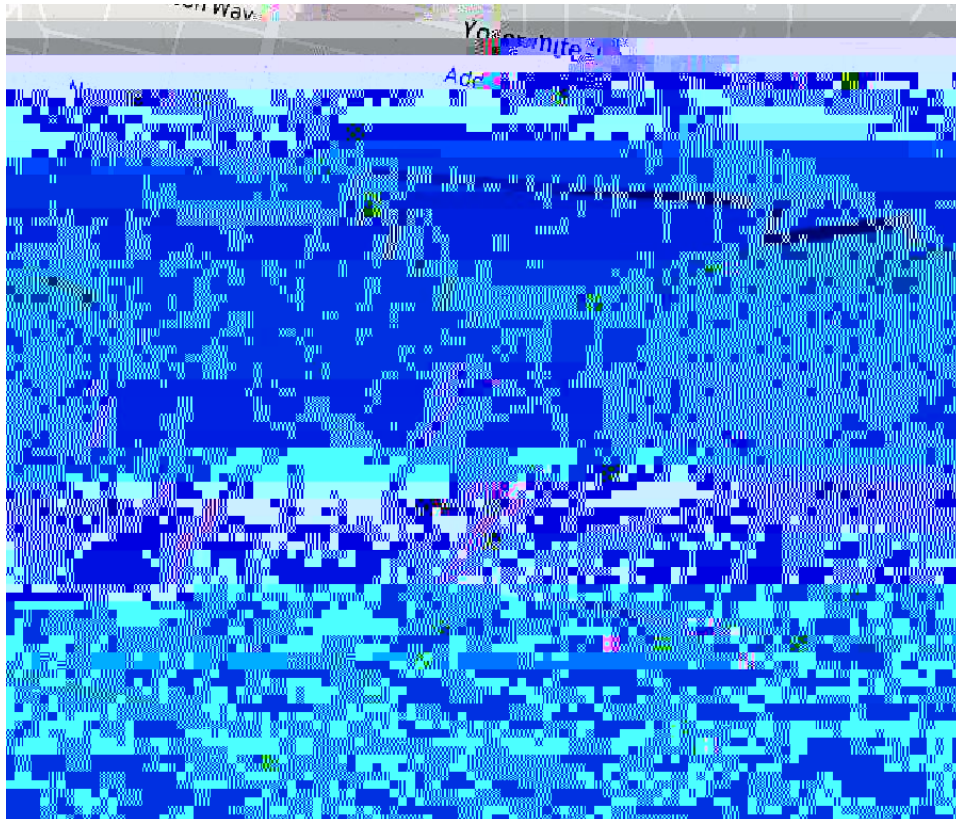
## Safety Escort Program REGULATIONS

[safety/programs/safety-escorts](http://www.oxy.edu/campus-safety/programs/safety-escorts)

[www.oxy.edu/campus-](http://www.oxy.edu/campus-safety/programs/safety-escorts)

(323)259-2599

## SAFETY ESCORT SERVICE BOUNDARIES





---

## **Additional Campus Safety Department Services**

**Campus Safety Patrol Zone (Service Area)**



---

# Reporting Crimes or Other Emergencies

## Campus Safety

Campus Safety Department

Director of Campus Safety

## EMERGENCY PHONES

Title IX Office, Human Resources, Dean of Students Office



---

**Title IX Office**



**Human Resources Department**

**Dean of Students Office**



**Reporting to Other Campus Security Authorities**

**CAMPUS SECURITY AUTHORITY (CSA) POLICY**

**PASTORAL AND PROFESSIONAL MENTAL HEALTH COUNSELORS**



---

## TITLE IX RESPONSIBLE EMPLOYEES

## VOLUNTARY, CONFIDENTIAL REPORTING

[www.oxy.edu/sexual-respect-title-ix/how-report](http://www.oxy.edu/sexual-respect-title-ix/how-report)



---

# **Campus Security Policies, Crime Prevention, and Safety Awareness Programs**

**Crime Prevention and Safety Awareness Programs**

**Residential Education and Housing Services**



---

## Additional Campus Safety and Security Policies

### FIREARMS AND WEAPONS

#### Daily Crime Log

[safety/daily-crime-log.](http://www.oxy.edu/campus-safety/daily-crime-log)

[www.oxy.edu/campus-](http://www.oxy.edu/campus-)

[campus-safety/daily-crime-log](http://www.oxy.edu/campus-safety/daily-crime-log)

[www.oxy.edu/](http://www.oxy.edu/)

#### Timely Warning Reports

*Clery Act*

*Clery*

*serious or continuing threat*



---

## Safety Bulletins





---

# Sexual Misconduct, Intimate Partner Violence, and Stalking: Policy

*Clery Act.*



---

---

## **What to Do If You Experience Sexual Harassment, Sexual Assault, Intimate Partner Violence, or Stalking**

- 1. Get to a safe place.**
  - 2. Access campus and local community services to receive the care, support, and assistance you deserve.**
  - 3. Preserve evidence in cases of sexual violence, intimate partner violence, or stalking.**
- 
- 4. Seek medical care as soon as possible.**
  - 5. Consider filing a report with the College's Title IX Office, the Los Angeles Police Department Northeast Division, and/or Campus Safety Department.**

---

---

### **LOCAL SART (SEXUAL ASSAULT RESPONSE TEAM) HOSPITALS**

*Taxi vouchers are available*

*Rape Treatment Center at Santa Monica- UCLA Medical Center*



---

*San Gabriel Valley Medical Center*

## **Sexual Misconduct Resources**

### **TITLE IX COORDINATOR AND DEPUTY COORDINATORS**

**Jody Shipper**  
*Interim Title IX Coordinator*

---

**Alison Haehnel**  
*Deputy Title IX Coordinator & Head Softball Coach*

---

**Jacalyn Feigelman**  
*Deputy Title IX Coordinator & Associate Director of Human Resources*

---

**Heather N. Lukes**  
*Deputy Title IX Coordinator & Associate Professor of Critical Theory & Social Justice*

---



---

## Campus Safety

### FOR STUDENTS ONLY

### COMMUNITY RESOURCES FOR STUDENTS AND EMPLOYEES

#### LAPD

**LAPD Northeast Division**  
*(Occidental is located in Northeast Division)*

[www.lapdonline.org/northeast\\_community\\_police\\_station](http://www.lapdonline.org/northeast_community_police_station)

#### Peace Over Violence (POV)

[www.peaceoverviolence.org](http://www.peaceoverviolence.org)

*POV case managers can provide assistance and support with the medical, psychological, emotional, and criminal legal process as well as accompaniment to hospitals, law enforcement agencies, and court appointments. All services are free and offered in English, Spanish, and ASL. The Peace Over Violence website also contains a list of various legal options and resources available to survivors:*

[www.peaceoverviolence.org/legal-services/?rq=your%20rights](http://www.peaceoverviolence.org/legal-services/?rq=your%20rights)

#### Los Angeles LGBT Center

[www.lalgbtcenter.org](http://www.lalgbtcenter.org)

*Provides support and advocacy services for LGBTQ community members.*



---

## CONFIDENTIAL RESOURCES FOR STUDENTS AND EMPLOYEES

### ON-CAMPUS CONFIDENTIAL RESOURCES (NON-MEDICAL)

#### *For Students*

#### **Occidental Sexual Violence Survivor Advocate Marianne Frapwell, MSW, MBA**

*Accessible during business hours to provide completely confidential crisis support and resource options to students who experience sexual assault of any kind, including sexual assault, dating or domestic violence, stalking, or sexual harassment. Support includes, but is not limited to, advising, case management, and accompanying survivors to rape treatment centers, or legal or law enforcement meetings. (Outside of business hours, survivor advocate services are provided by Peace Over Violence, and can be requested by calling the Oxy 24/7 Confidential Hotline listed below.) The Survivor Advocate also manages the Project S.A.F.E. office, which conducts comprehensive outreach and educational programming.*

#### **Oxy 24/7 Confidential Hotline**

#### **Emmons Wellness Center**

[www.oxy.edu/emmons-wellness-center](http://www.oxy.edu/emmons-wellness-center)

*Provides confidential psychological counseling services.*

#### **Office for Religious and Spiritual Life**

[www.oxy.edu/office-religious-spiritual-life](http://www.oxy.edu/office-religious-spiritual-life)

*Provides spiritual guidance and, in the context of ordained clergy, confidential support.*

#### **Oxy Assault, Advocacy, & Case Management Team (OAACM)**

*The Oxy Assault, Advocacy and Case Management Team provides a comprehensive support system to sexual assault survivors that includes advocacy, counseling, and medical services, as well as information about forensic exams, housing and academic accommodations.*



---

*For Employees*

**Employee Assistance Program**

*Provides confidential telephone or face-to-face consultation with a licensed professional counselor.*

[www.unum.com/lifebalance](http://www.unum.com/lifebalance)

**OFF-CAMPUS CONFIDENTIAL COMMUNITY RESOURCES**

**Rape, Abuse and Incest National Network (RAINN)**

*A confidential and anonymous national sexual assault and intimate partner violence and stalking hotline.*

[www.rainn.org](http://www.rainn.org)

**Peace Over Violence's L.A. Rape and Battering Hotline**

*The Los Angeles Rape and Battering hotline is a confidential 24-hour hotline where staff and volunteers are available to provide emotional support, advocacy, information and referrals.*

[www.peaceoverviolence.org](http://www.peaceoverviolence.org)

**National Domestic Violence Hotline**

[www.thehotline.org](http://www.thehotline.org)

**CONFIDENTIAL MEDICAL RESOURCES**



---

**San Gabriel Valley Medical Center**

[www.sgvmc.com/Clinical-Services/Sexual-Assault-Response-Team.aspx](http://www.sgvmc.com/Clinical-Services/Sexual-Assault-Response-Team.aspx)

**Rape Treatment Center at Santa Monica-UCLA Medical Center**

[www.uclahealth.org/santa-monica/rape-treatment](http://www.uclahealth.org/santa-monica/rape-treatment)

*Additionally, the Rape Treatment Center can provide a survivor advocate who can provide support to survivors.*

**LIST OF RESOURCES FOR REPORTING, CARE, AND SUPPORT**

**California Women's Law Center (CWLC)**

[www.cwlc.org](http://www.cwlc.org)



---

**DFEH Los Angeles Office**

**EEOC Los Angeles District Office**

**Occidental College Human Resources Office**

---

**Project SAFE (Sexual Assault-Free Environment)**

**[www.oxy.edu/project-safe](http://www.oxy.edu/project-safe)**

**United States Department of Education**

---





---

Bureau for Private Postsecondary Education

[bppe.ca.gov/enforcement/faqs.shtml](http://bppe.ca.gov/enforcement/faqs.shtml)

[bppe.ca.gov/enforcement/complaint.shtml](http://bppe.ca.gov/enforcement/complaint.shtml)

## ANONYMOUS REPORTING

[www.oxy.edu/sexual-respect-title-ix](http://www.oxy.edu/sexual-respect-title-ix) [https://cm.maxient.com/reportingform.php?OccidentalCollege&layout\\_id=10](https://cm.maxient.com/reportingform.php?OccidentalCollege&layout_id=10)

**Sexual Misconduct, Intimate Partner Violence (Dating and Domestic Violence), and Stalking Defined**

## SEXUAL OR GENDER-BASED HARASSMENT



---

*Quid Pro Quo Harassment*

*Hostile Environment.*

***Sexual or Gender-Based Harassment:***



---

**Physical conduct**

**Verbal conduct**

**Visual conduct**

**Written conduct**

**Quid pro quo conduct**

## **SEXUAL MISCONDUCT**

## **SEXUAL ASSAULT**

*Sexual intercourse*

*This definition tracks the FBI's Uniform Crime Report definition of rape: "the penetration, no matter how slight, of the vagina or anus with any body part or object, or oral penetration by a sex organ of another person, without the consent of the victim." Under many state laws, including California, however, rape definitions differ in that they require proof of an element of force or threat of force. Our definition incorporates both.*



---

## NON-CONSENSUAL SEXUAL CONTACT

## SEXUAL EXPLOITATION

## STALKING

*course of conduct*

*Reasonable person*

*Substantial emotional distress*



---

## INTIMATE PARTNER VIOLENCE

*Occidental's policy and policy definitions of sexual misconduct, intimate partner violence, and stalking are those that are applied to members of the Occidental community. These also constitute violations of California state law.*



---

## **California Definitions: Sexual Misconduct, Intimate Partner Violence, and Stalking**

**Sexual Battery**



---

## Stalking

Abuse      Domestic Violence

Abuse

Domestic Violence

Cohabitant

California does not define “dating violence.”

## Sexual Misconduct & Intimate Partner Violence: Definitions of Key Terms

### AFFIRMATIVE CONSENT

*Informed and reciprocal:*



---

*Freely and actively given:*

*Mutually understandable:*

*Not indefinite:*

**withdrawn by any Party at any time.**

**Consent may be**

*Not unlimited:*

*Age:*

**It shall not be a valid excuse to alleged lack of affirmative consent that the Respondent believed that the Complainant consented to the sexual activity under either of the following circumstances: (a) The Respondent's belief in affirmative consent arose from the intoxication or recklessness of the Respondent, or (b) the Respondent did not take reasonable steps, in the circumstances known to the Respondent at the time, to ascertain whether the Complainant affirmatively consented.**

**FORCE**





---

## INTIMIDATION

## COERCION

## INCAPACITATION

**It shall not be a valid excuse that the Respondent believed that the Complainant affirmatively consented to the sexual activity if the Respondent knew or reasonably should have known that the Complainant was unable to consent to the sexual activity under any of the following circumstances: (a) the Complainant was asleep or unconscious; (b) the Complainant was incapacitated due to the influence of drugs, alcohol, or medication, so that the Complainant could not understand the fact, nature, or extent of the sexual activity; (c) the Complainant was unable to communicate due to a mental or physical condition.**



---

## Privacy and Confidentiality: Understanding the Differences

*Clery Act*

*Violence Against Women Act of 1994*

“Privacy” and “confidentiality” have distinct meanings under this Policy.

### PRIVACY

*will only be shared with a limited circle of individuals who “need to know” in order to assist in the assessment, investigation, or resolution of the report.*

*Rights and Privacy Act*

[www.oxy.edu/student-handbook/general-college-policies/family-education-rights-privacy-act-ferpa](http://www.oxy.edu/student-handbook/general-college-policies/family-education-rights-privacy-act-ferpa)

*Family Educational*

*Health Insurance Portability and  
California*

*Accountability Act*

*Confidentiality of Medical Information Act*

*Clery Act*



---

## CONFIDENTIALITY

*cannot be revealed to any other individual without the express permission of the individual except as otherwise provided by law.*

## REQUESTS FOR CONFIDENTIALITY

**Reporting Sexual Misconduct, Intimate Partner Violence (Dating Violence, Domestic Violence), and Stalking**



[www.oxy.edu/sexual-respect-title-ix/policies-procedures](http://www.oxy.edu/sexual-respect-title-ix/policies-procedures).

## **EMERGENCY AND EXTERNAL REPORTING OPTIONS**

## **OTHER REPORTING CONSIDERATIONS**

*Timeliness and Location of Incident*

*Amnesty for Alcohol or Other Drug Use or Other Conduct Violations by Students*



---

**Being intoxicated by drugs or alcohol is no defense to any violation of the Policy and does not diminish one's responsibility to obtain consent.**

***Coordination with Law Enforcement***

***False Reports***

***Reports Involving Minors or Suspected Child Abuse***



---

## **How the College Addresses Reports of Sexual Misconduct, Intimate Partner Violence (Dating Violence, Domestic Violence), and Stalking**



---

## Complainant And Respondent Rights During The Process

*The Complainant and Respondent have the right:*

- 
- 
- 
- 
- 
- 
- 
- 

### INTAKE MEETING



---

*Clery Act*

*not*

*could*





---

## SUPPORTIVE MEASURES AND REMEDIES

*Range of Measures*

*Students*



---

### **Employees**

*Complainants (students and employees) may also be able to obtain an order of protection, “no contact” order, a restraining order, or a similar lawful order issued by a criminal, civil, or tribal court, which the Title IX Coordinator or CRC will explain to complainants in the intake meeting.*

### **INTERIM SUSPENSION OR SEPARATION**

### **STUDENTS: INFORMAL AND FORMAL RESOLUTIONS**



***Informal Resolution***



---

## *Formal Resolution*

- a.**
- b.**
- c.**
- d.**
- e.**

◦

◦

◦

◦

◦

◦



---

## *Preliminary Investigation*

**Step One: Initial Fact-Gathering**

**Step Two: Evidence Review**



---

### **Step Three: Rebuttal Fact-Gathering**

### **Step Four: Summary of Evidence Report**

*Hearing*



---

**a. Hearing Officer:**

**b. Scheduling:**

**c. Pre-Hearing Meeting:**



---

**d. Witnesses:**

**e. Case Presentation:**





---

f. Expectations of the Complainant, Respondent, and Witnesses at a Hearing:

g. Record of Hearing:

h. Standard of Evidence:  
*preponderance of the evidence*

i. Notice of Hearing Outcome:

## **EMPLOYEES: INFORMAL AND FORMAL RESOLUTIONS**

### ***Informal Resolution***



---

***Formal Resolution***

***Initial Stages***

***Notice of the Allegations to the Respondent***



---

*Formal Investigation*

*preponderance of the evidence*



---

## **SANCTIONS**

### ***Student Sanctions***

**Sanctions are effective immediately. If the Respondent appeals the findings contained in the Final Report, the sanctions will continue in effect during the appeal. The sanctions may be lifted only if, as a result of the final**



---

outcome of the appeal, the Respondent is found not responsible for one or more of the original policy violations submitted to the Review Panel.

**Warning:**

**Censure:**

**Disciplinary Probation:**

**Restitution:**

**Removal from Campus Housing:**

**Suspension:**

**Expulsion:**

**Revocation of Admission and/or Degree:**

**Withholding Degree:**

**Other:**

**Multiple Sanctions:**

***Employee Sanctions***



---

**Warning:**

**Reprimand:**

**Restitution:**

**Restricted Access or Modification of Duties:**

**Probation:**

**Suspension Without Pay:**

**Termination of Employment:**

**Other:**

**Multiple Sanctions:**

**STUDENTS: APPEALS PROCESS**

***Complainant:***



---

***Respondent:***

***Significant Procedural Error:***

***New Information:***

**Procedural Error:**



---

**New Information:**

*Notification of Appeal Outcome*

## **EMPLOYEES: APPEALS PROCESS**

*Complainant:*

**Respondent:**

**Significant Procedural Error:**

**New Information:**





---

**Procedural Error:**

**New Information:**

*Notification of Appeal Outcome*

## **REMEDIES AND NON-DISCIPLINARY ADMINISTRATIVE MEASURES**

*Students*

**Respondent:**

**Campus Community:**



---

**Complainant:**

*Employees*

## **Additional Provisions**

**ADVISOR OF CHOICE**

**TRAINING**

**NOTIFICATIONS**

**MODIFICATION OF THE GRIEVANCE PROCESS**



---

## **ALCOHOL AND SUBSTANCE USE**

## **PAST SEXUAL HISTORY**

## **RESPONDENT'S PRIOR CONDUCT HISTORY**

## **CONSOLIDATION OF INVESTIGATIONS**

## **FAILURE TO COMPLY WITH INVESTIGATION AND DISCIPLINARY PROCESS**



---

## **INTEGRITY OF PROCEEDING**

## **RECORDS**

## **Retaliation**

## **Title IX Investigation Training**



---

*Violence Against Women Act*



---

# Prevention of Sexual Misconduct, Intimate Partner Violence, and Stalking

## **TITLE IX OFFICE**

*Prevention and Awareness Programs*

*Title IX and Public Awareness Events*



---

## **PROJECT S.A.F.E.**

*prevention and intervention support program*

## **Prevention Education and Awareness Programs**

### **DEFINITIONS**

#### **Awareness programs**

*Ongoing prevention and awareness campaigns*

*Primary prevention programs*

### **“BYSTANDER INTERVENTION” DEFINED**

## **Project S.A.F.E.’s Empowerment-Based Violence Prevention Workshop**



---

## **Specific Programming by Project S.A.F.E in 2018**

### **PREVENTION AND AWARENESS PROGRAMS**

*Empowerment-Based Violence Prevention Workshop (Active Bystander Intervention)*





---

*How to Be a First Responder*

*Crisis Intervention 101 and Secondary Trauma*

*Healthy Relationships*

*Campus Sexual Violence and Prevention, Allyship, and Activism – Orientation  
Debrief Sessions*



---

***Sexual Violence, Student Activism, and Consent***

***Think About It (online program)***

**TRAINING ON AVAILABLE RESOURCES**

***Resources for Survivors***

***Project SAFE Mission and Resources***

**PREVENTION AND PUBLIC AWARENESS EVENTS**

***Stalking and Unhealthy Relationships Awareness Tabling***

***Tarana Burke - Keynote Speaker Event***

***Take Back the Week (week-long event series)***

***Programming for all students.***



---

*Tabling in the Quad Activities*

*#MeToo in the Disability Space*

*Take Back the Night Survivor Speak-Out*

*Art as Healing Workshop*

*“Out in the Night” – Documentary Screening and Discussion*

*Clothesline Project*

*Trauma-Informed Yoga Workshop*



---

## *Denim Day Resource Fair*

### *"Meet the PAs" Tabling*

### *Empowerment Week (week-long event series)*

*Programming for all students.*

#### *Tabling the Quad Activities*

- "Chalk the Quad"

### **Tie-Dye Fundraiser**

### **Healthy Relationships Photo Campaign**

*Resources for and How to Support LGBTQIA+ Survivors of Interpersonal Violence*

*Herbal Tea and Healing with FEAST Workshop*

*Survivor Self-Care Night*



---

## Risk Reduction

*Risk reduction*

### **INCREASING COMMUNITY SAFETY WHILE REDUCING RISK FACTORS ON CAMPUS**

*If you or your friends are on campus, consider:*

*If you or friends live in a residential hall or apartment, consider:*



---

*If you or friends are on social media and/or like techy gadgets, consider:*

### **Apps**

LiveSafe (iOS and Android) - [www.livesafemobile.com](http://www.livesafemobile.com)

bSafe (iOS and Android) - <https://getbsafe.com>

Circle of 6 U (iOS and Android) - [www.circleof6app.com/schools](http://www.circleof6app.com/schools)

OnWatch (iOS and Android) - [www.onwatchoncampus.com](http://www.onwatchoncampus.com)

React Mobile (iOS and Android) - [www.reactmobile.com](http://www.reactmobile.com)



---

Watch Over Me (iOS and Android) - [www.watchovermeapp.com](http://www.watchovermeapp.com)

myPlan App from One Love Foundation (iOS and Android) - [www.joinonelove.org/get-help](http://www.joinonelove.org/get-help)

*If you or friends are attending social events or parties, consider:*

*If you or friends are engaging in sexual activity:*



---

## Registered Sex Offender Information/Megan's Law

[meganslaw.ca.gov](http://meganslaw.ca.gov)





---

# Emergency Management

[www.facebook.com/occidental](https://www.facebook.com/occidental)

[www.oxy.edu](https://www.oxy.edu)  
[twitter.com/occidental](https://twitter.com/occidental)

## Disaster Preparedness and Response Plan

[www.oxy.edu/campus-safety/emergency-preparations-response-plans/emergency-operations-plan](https://www.oxy.edu/campus-safety/emergency-preparations-response-plans/emergency-operations-plan)   [www.oxy.edu/campus-safety/emergency-preparedness-response-plans/active-shooter-emergency-action-plan](https://www.oxy.edu/campus-safety/emergency-preparedness-response-plans/active-shooter-emergency-action-plan)

## Emergency Response Exercises



---

## **Annual Publication of Emergency Response and Evacuation Procedures**

*Earthquake Drill: Great ShakeOut*  
*Thursday, October 18, 2018 at 10:18 a.m.*

**Emergency Notification to the College Community (OxyAlerts, Etc.)**

[www.facebook.com/occidental](https://www.facebook.com/occidental)

[www.oxy.edu](http://www.oxy.edu)  
[twitter.com/occidental](https://twitter.com/occidental)



---

**A) CONFIRMING THE EXISTENCE OF A SIGNIFICANT EMERGENCY OR DANGEROUS SITUATION**

**B) DETERMINING THE CONTENTS OF THE EMERGENCY NOTIFICATION**

**C) PROCEDURES USED TO NOTIFY THE CAMPUS COMMUNITY**

**D) PROCEDURES FOR DISSEMINATING EMERGENCY INFORMATION TO THE LARGER COMMUNITY**

*(Individuals and Organizations Outside the Campus Community)*



---

## ENROLLING IN OCCIDENTAL'S EMERGENCY NOTIFICATION SYSTEM (OXYALERT)



---

# **Security of and Access to College Facilities**

## **Access to Occidental College: Policy**

### **Academic and Administrative Building Access Information**

### **Residence Hall Access Information**



---

[oxy.edu/residential-education-housing-services](https://oxy.edu/residential-education-housing-services)

## **Card Key Access Policy**

## **Facilities Management Support**

## **Security Considerations Used in the Maintenance of Campus Facilities**





---

# Residential Education and Housing Services

## Missing-Student Notification Policy





---

## The Office of Student Conduct

### MISSION

“Code”



---

## JURISDICTION

-

### The Student Code of Conduct

#### RULES AND REGULATIONS

*No Smoking*

*Standards of Behavior*





## PROCEDURAL PROTECTIONS

[handbook.](#)

<https://www.oxy.edu/student->



---

# Alcohol and Other Drugs Policy

*Students are responsible for knowing the following:*

## PHILOSOPHY

### Student Alcohol Policy

## OCCIDENTAL EXPECTATIONS OF BEHAVIOR

**Under-age drinking:**



---

**Respect for the community while under the influence:**

**Alcohol possession/consumption in dry residence halls**

**Alcohol possession/consumption on other areas of campus**

**Responsible drinking at social events:**

**Supplying alcohol to peers and guests:**

**Supplying alcohol to prospective students:**

**Serving alcohol at student-sponsored events:**

**Sale of alcoholic beverages:**

**Driving under the influence:**

**Off-campus policy violation:**



---

# Student Drug Policy

## GENERAL GUIDELINES

### OCCIDENTAL EXPECTATIONS OF BEHAVIOR

**Illegal substance use:**

**Over-the-counter and prescription substance use:**

**Medical marijuana possession:**

**Supplying prospective students with drugs and/or pharmaceuticals:**



---

**Illegal activity by association:**

## **DRUG OFFENSES AND PENALTIES**

**Possession of Controlled Substances:**

**Selling of Controlled Substances:**

**Possession of Marijuana:**

**Possession with Intent to Sell Marijuana:**

**Distribution of Prescription Drugs:**

**Under the Influence of Controlled Substance:**

## **SANCTIONS**





## **Employee Drugs and Alcohol Policy**

[www.oxy.edu/sites/default/files/assets/HR/Employee-Drug-Alcohol-Policy\\_Revised\\_2017.pdf](http://www.oxy.edu/sites/default/files/assets/HR/Employee-Drug-Alcohol-Policy_Revised_2017.pdf)

**California State Alcoholic Beverage Laws and Penalties**



---

**Open Container:**

**Minor in Possession (MIP):**

**Driving Under the Influence (DUI):**

**Driving Under the Influence (DUI) While Under Age 21:**

**Cycling Under the influence (CUI):**

**Providing False Identification:**

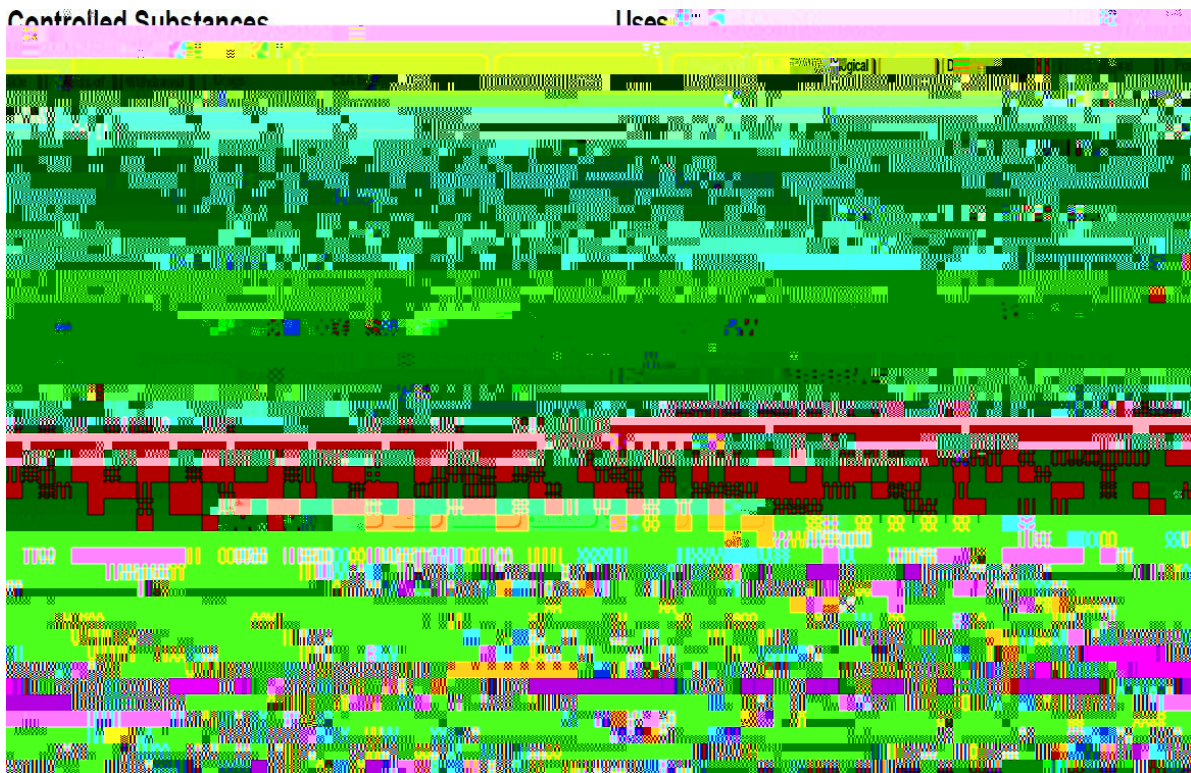
**Under 21 Purchase of Alcohol:**

**Selling Alcohol without a License:**

**Drunk in Public (DIP):**

**Furnishing Alcohol to a Person Under 21 or an Intoxicated Person:**

## **Associated Health Risks and Resources**



**STUDENTS**

**EMPLOYEES**



---

[www.unum.com/lifebalance](http://www.unum.com/lifebalance)

## **INFORMATION AND REFERRALS FOR DRUG & ALCOHOL ADDICTION TREATMENT**

**Pasadena Council on Alcoholism and Drug Dependence**

[www.socialmodelrecovery.org/pasadena-council-alcoholism-and-drug-dependence-pcadd](http://www.socialmodelrecovery.org/pasadena-council-alcoholism-and-drug-dependence-pcadd)

**Al-Anon Family Groups of Greater Los Angeles**

[www.alanonla.org](http://www.alanonla.org)

**San Gabriel Valley Narcotics Anonymous Help Line**

[www.sgvna.com](http://www.sgvna.com)

## **INPATIENT AND OUTPATIENT TREATMENT**

**Glendale Adventist Medical Center**

**Las Encinas Hospital**

**Della Martin Center for Behavioral Sciences at Huntington Hospital**



---

## The Haven at College

[www.thehavenatcollege.com](http://www.thehavenatcollege.com)

*The Haven at College has a treatment program specifically for college students that provides outpatient and residential treatment.*

[www.oxy.edu/emmons-wellness-center](http://www.oxy.edu/emmons-wellness-center).

## Medical Amnesty Policy

## APPLICATION TO STUDENT ORGANIZATIONS

## Parental Notification



---

[www.oxy.edu/student-handbook/general-college-policies/family-education-rights-privacy-act-ferpa](http://www.oxy.edu/student-handbook/general-college-policies/family-education-rights-privacy-act-ferpa)



---

# Annual Disclosure of Crime Statistics

## Definitions of Reportable Clergy Crimes

### CRIMINAL OFFENSES

*Murder/Non-Negligent Manslaughter*

*Manslaughter by Negligence*

*Rape*

*Fondling*

*Incest*

*Statutory Rape*

*Robbery*

*Aggravated Assault*



---

*Burglary*

*Motor Vehicle Theft*

*Arson*

**HATE CRIMES**

*Larceny/Theft*

*Simple Assault*

*Intimidation*

*Destruction/Damage/Vandalism*

**CATEGORIES OF BIAS (UNDER THE CLERY ACT)**

*Race*





---

*Religion*

*Sexual Orientation*

*Gender*

*Gender Identity*

*Ethnicity*

*National Origin*

*Disability*

**VIOLENCE AGAINST WOMEN ACT (VAWA) OFFENSES**

*Dating Violence*

*Domestic Violence*



---

## ***Stalking***

***Course of Conduct***

***Reasonable Person***

***Substantial Emotional Distress***

***may include acts committed over  
electronic communication (e.g., emails, texts, or social media)***

## **ARRESTS AND DISCIPLINARY REFERRALS**

***Weapons Law Violations***

***Drug Law Violations***

***Liquor Law Violations***





Offense	2018					2017					2016				
	Student Housing	Total On Campus	Non-Campus Building or Property	Public Property	Unfounded Crimes	Student Housing	Total On Campus	Non-Campus Building or Property	Public Property	Unfounded Crimes	Student Housing	Total On Campus	Non-Campus Building or Property	Public Property	Unfounded Crimes

Arrests: -----


Referred for Disciplinary Action: -----


*reported*      *Clery Act*

*occurred*

*occurred*

**HATE CRIMES**

- 2018:**
- 2017:**
- 2016:**



---

## UNFOUNDED CRIME REPORTS

*Clery Act*

*Annual Fire Safety & Security Report*

### Crimes Involving Student Organizations at Off-Campus Locations

#### Clery Act Geography

##### DEFINITIONS

*Clery Act*    **on-campus**

**Controlled by**

**Reasonably contiguous**

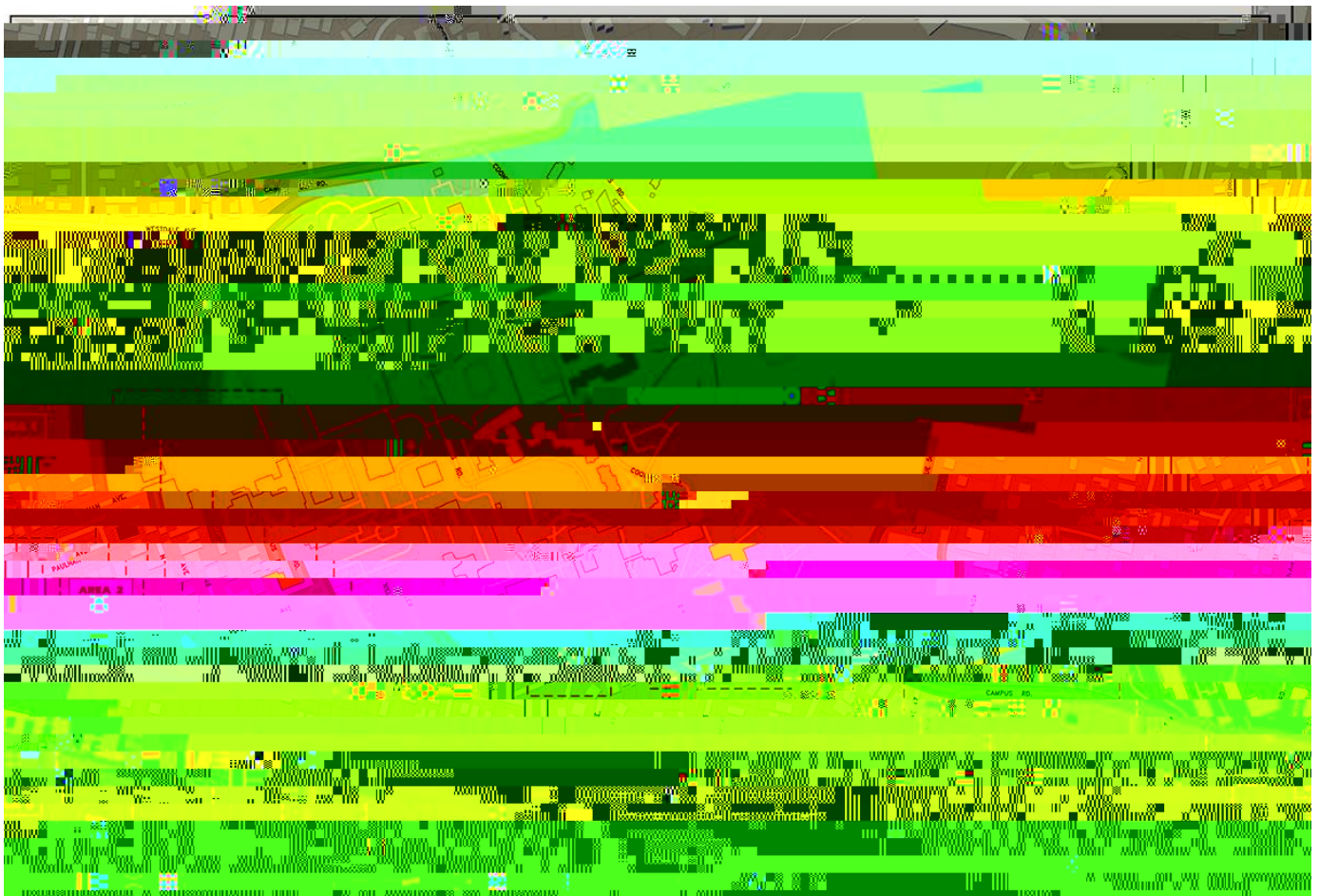
*Clery*    **public property**

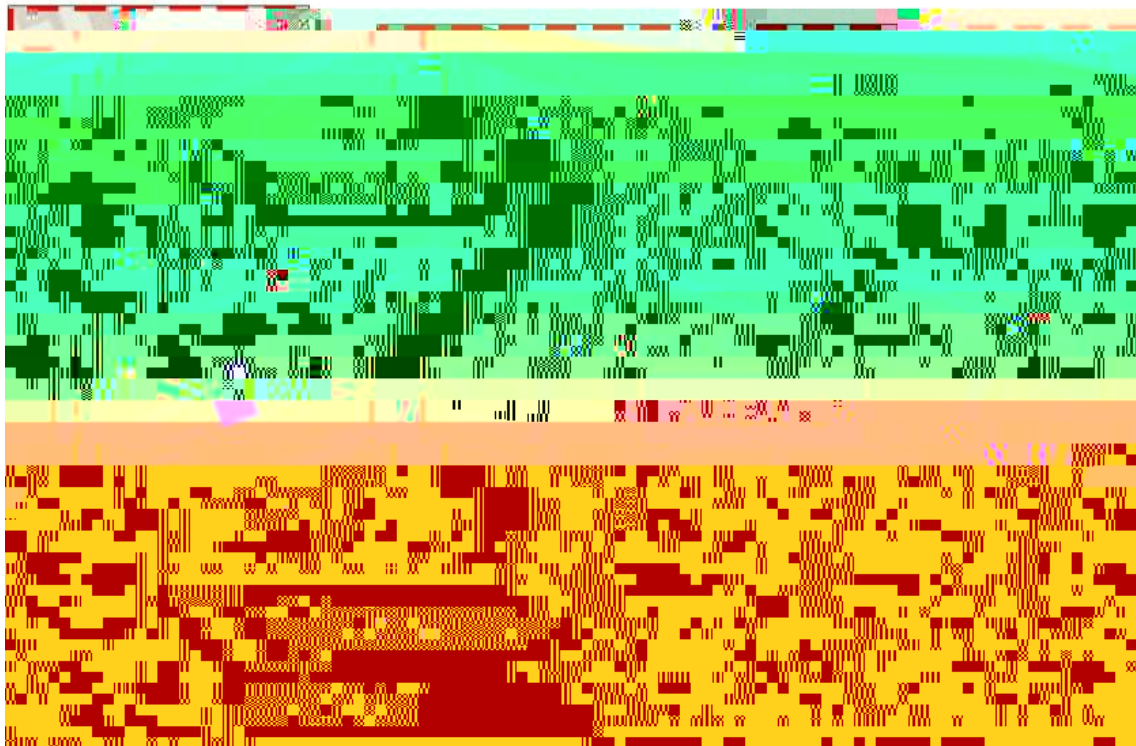
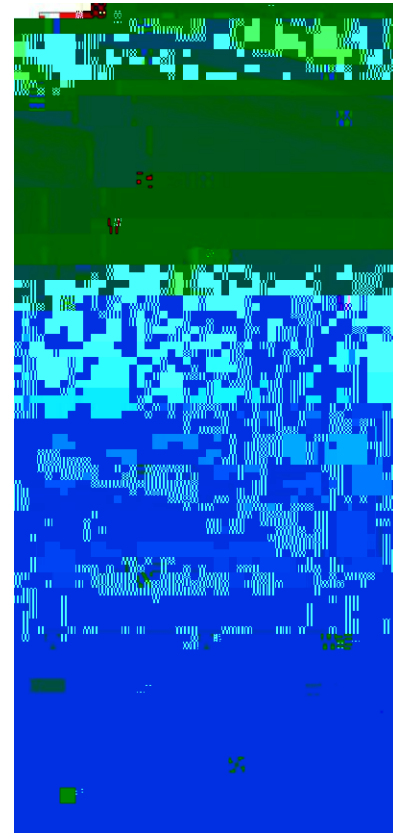
*Clery*    **non-campus**



## Clery Act

### CLERY GEOGRAPHY MAPS







---

# Fire Safety Report

*Higher Education Opportunity Act*

*Higher Education Act*

## Viewing the Fire Log

## Fire Drills

## Fire Alarm Inspection and Fire Hydrant Testing

## Fire Safety





---

**NEWCOMB HALL**

**ERDMAN HALL**

**CHILCOTT HALL**

**HAINES HALL**

**EILEEN NORRIS HALL ("E. NORRIS")**

**STEARNS HALL**

**BRAUN HALL**



---

**STEWART-CLELAND HALL (“STEWIE”)**

**PAULEY HALL**

**BELL-YOUNG HALL (“B-Y”)**

**WYLIE HALL**

**BERKUS HALL**

**THE BERKUS HOUSE (1601 CAMPUS ROAD)**

**4909 RANGEVEIW (SAE HOUSE)**

**1480 CAMPUS ROAD (THEME HOUSE)**

**4863 STRATFORD ROAD (FOOD JUSTICE HOUSE)**



---

**4873 STRATFORD ROAD (THETA HOUSE)**

**Evacuation Procedures**

**Fire Safety Policies**



---

## PROHIBITED ITEMS IN STUDENT ROOMS



---

## **Fire Safety Education and Training Programs**

### **Fire Reporting**

**Director of Campus Safety or Campus Safety Officers:**

**Risk Manager:**

**Environmental Health & Safety Coordinator:**

**Facilities Maintenance\*:**

- *For investigation of the cause and corrective measures.*

### **Future Improvements for Fire Safety**







# Emergency Services Contact Information

## FIRE, PARAMEDICS AND/OR POLICE

Emergency: 911  
9-911

*If you call from a cellphone, be sure to tell the dispatcher to have the emergency responders meet Campus Safety officers at the Alumni Avenue/Campus Road intersection. Immediately call Campus Safety and report the incident. Officers will meet the responders and bring them to your location.*

Non-Emergency: (323) 344-5701 877-ASK-LAPD (877-275-5273)

## DEPARTMENT OF CAMPUS SAFETY

Emergency	
Environmental Health and Safety	
Facilities Management	

## HEALTH CONCERNS

Emmons Wellness Center: (323)259-2657

Oxy 24/7 Confidential Hotline: (323)341- 4141

## RESOURCES FOR STUDENTS

Title IX Coordinator	
Survivor Advocate	
Project S.A.F.E.	
24/7 Confidential Hotline	
Student Success Team	





---

<b>Office of the Dean of Students</b>	
<b>Residential Education and Housing Services</b>	
<b>Office for Religious &amp; Spiritual Life</b>	

## **RESOURCES FOR EMPLOYEES**

**(323)259-2613**  
**(323)259-2621**